

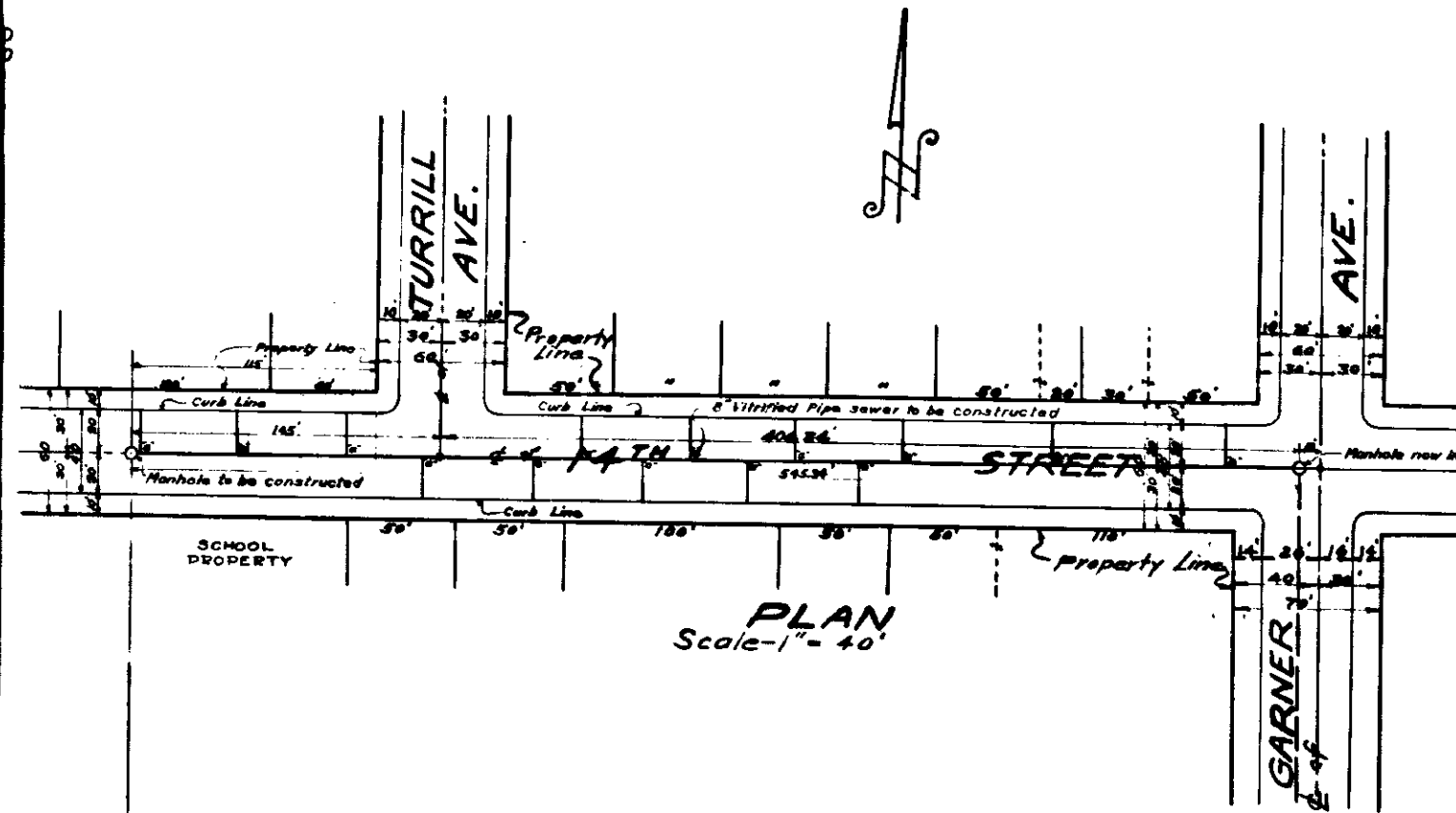
SHEET NO 1  
 PLAN NO 1717  
 FOR  
**14<sup>TH</sup> STREET SEWER**  
 BETWEEN  
 GARNER AVE AND MT VERNON AVE.  
 CITY OF SAN BERNARDINO  
 CALIFORNIA

APRIL 1947

RAYMOND D. FORSYTHE,  
 ACTING CITY ENGINEER

FILED  
 APR 25 1947  
 ACTING ENGINEER

PLAN ADOPTED August 25, 1947



**LEGEND**

- 4 or 10, means inch or inches
- 1 or 27, means foot or feet.
- NB means "Narrow"
- CL means Center Line
- EL means Elevation
- 8" Vitrified Pipe Sewer to be constructed, shown thus
- 4" x 4" Wyes with 4" Connecting Sewers to be constructed, shown thus
- Manholes to be constructed, shown thus
- Manholes now in, shown thus
- 8" Vitrified Pipe Sewer now in, shown thus
- St. means Street
- Ave. means Avenue.

**SEWER DETAIL**

- Lineal Ft. of 8" Vitrified Pipe Sewer to be constructed
- Lineal Ft. of 4" Vitrified Pipe Sewers to be constructed
- NB of 4" x 4" Wyes with 4" Connecting Sewers to be constructed
- NB of Manholes to be constructed

**TITLE TO STREETS**

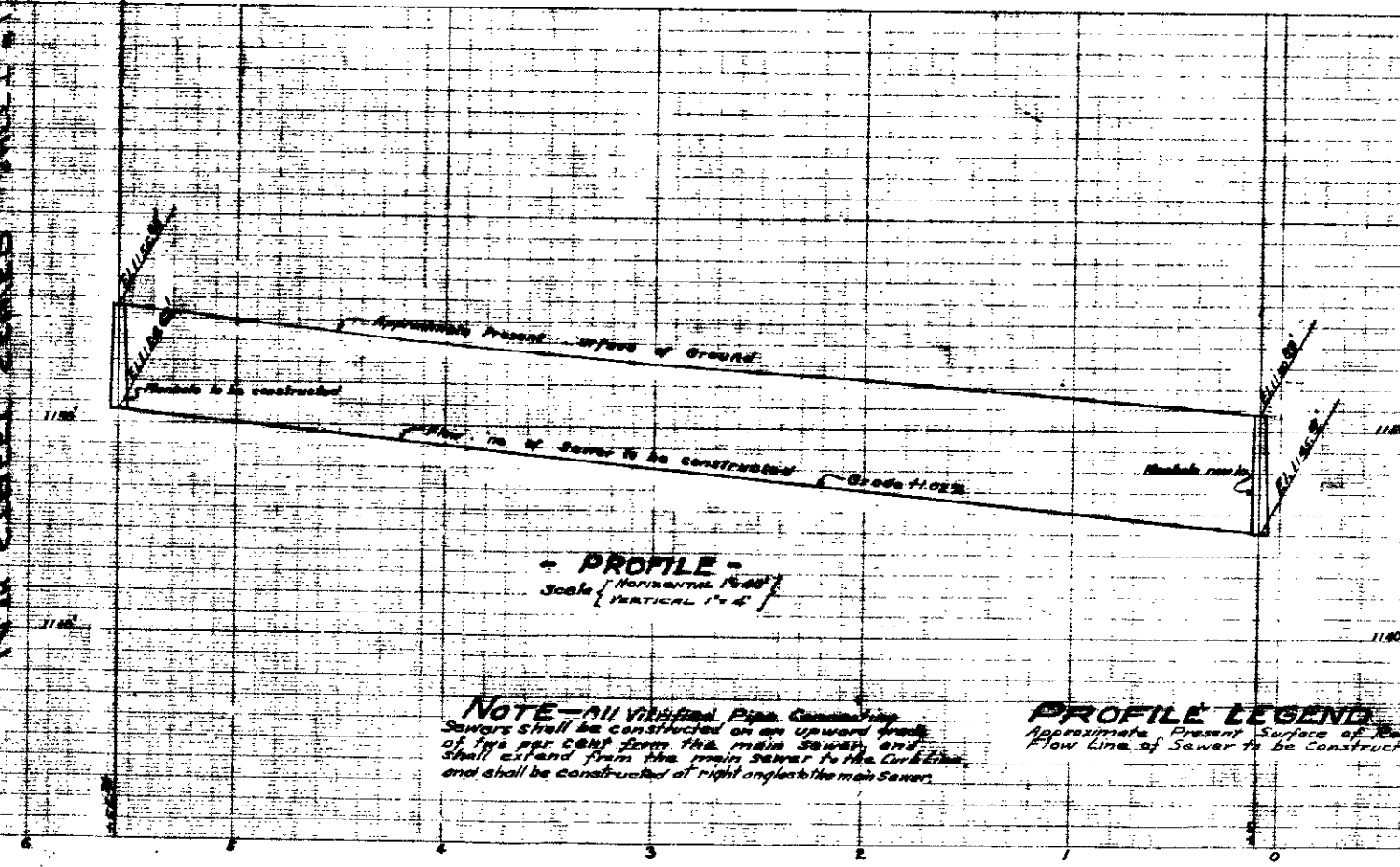
14<sup>TH</sup> STREET dedicated as (NORTH) SIDE STREET, bounded in Book 6 of Maps, of Page 15, records of San Bernardino County, California

**GRADE ORDINANCE**

Grade of 14<sup>TH</sup> STREET, established by Ordinance No 1166 of the City of San Bernardino, California, Adopted December 28, 1934

**DATUM**

All Elevations shown in this plan are in feet and are above a plane which is 10.44 feet below the City Bench Mark as established by Ordinance 383 of the City of San Bernardino, California



**NOTE**—All Vitrified Pipe Connecting Sewers shall be constructed on an upward grade of 1% per cent from the main sewer, and shall extend from the main sewer to the curb line, and shall be constructed at right angles to the main sewer.

**PROFILE LEGEND**

Approximate Present Surface of Roadway shown by Black Line, thus